

STATE OF MINNESOTA, }
COUNTY OF MURRAY, } ss.

I hereby certify that the within Instrument
was filed in this office for record on the
30TH day of AUGUST A.D. 20 19
at 9:00 o'clock A. M, and was duly
recorded as Document No. _____

Luellen C. Larson
County Recorder

Index No. _____ T-21 _____

CERTIFICATE OF LOCATION OF GOVERNMENT CORNER

EAST QUARTER Corner of Section 26, Township 107 N, Range 39 W

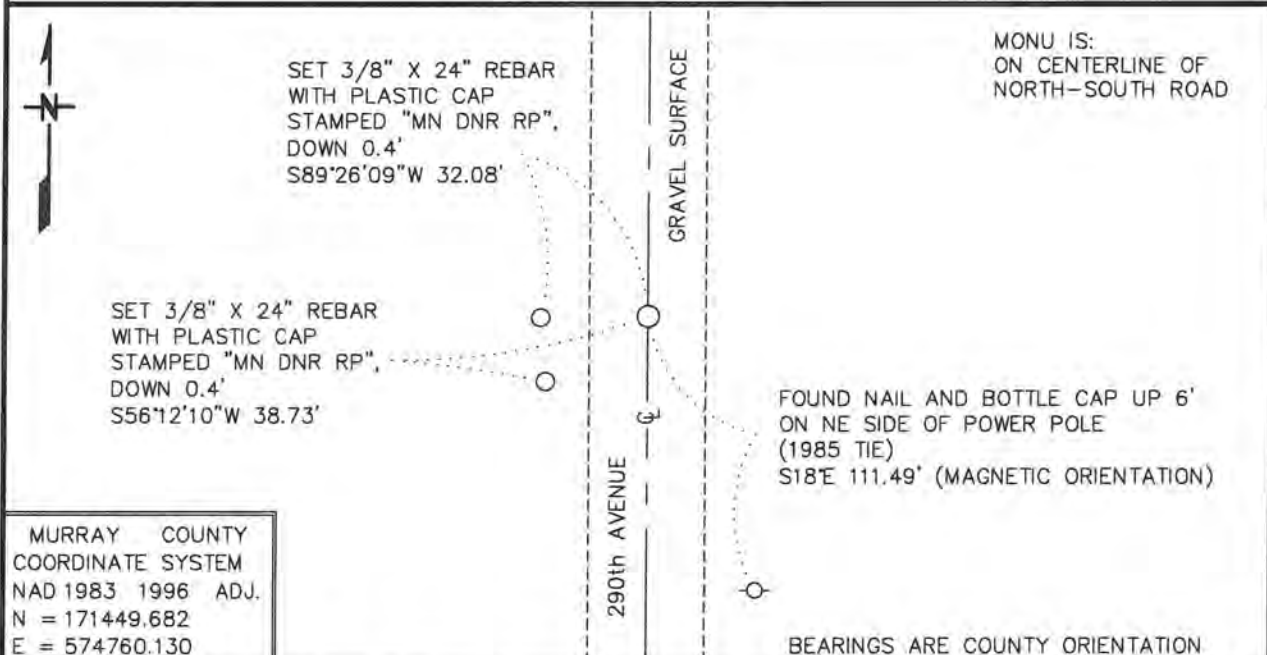
5TH Principal Meridian, State of Minnesota, County of MURRAY

At the corner location shown on the sketch:

■ On 10/18/2017 found a REBAR, DOWN 0.4'
DATE

■ left monument as found, lowered monument, removed monument (explain)

■ On 10/18/2017 Placed a PLASTIC CAP STAMPED "MN DNR LS 17003", ON
DATE TOP OF FOUND REBAR



MURRAY COUNTY
COORDINATE SYSTEM
NAD 1983 1996 ADJ.
N = 171449.682
E = 574760.130

Statement of evidence for this corner location is on back of this page.

APRIL 2018
WMA00745

I hereby certify that this plan, specification, or report was prepared by me or under my direct supervision and that I am a duly Licensed Land Surveyor under the laws of the State of Minnesota.

SIGNATURE Bruce W. Shepperd DATE 8/15/19 License Number 17003
BRUCE W. SHEPPERD

East Quarter Corner of Section 26, Township 108 North, Range 39 West

For additional information see:

1985 November, Lowell R. Pommerening Jr., PLS 17005, with the Minnesota Department of Natural Resources filed a Certificate of Location of Government Corner for this corner in the Murray County Recorder's Office.

The DNR Division of Lands and Minerals contacted the following for survey information:

Website - mngeo.state.mn.us for GLO plat and field notes

Website - murray-countymn.com for section and quarter section corner information

Murray County Recorder's Office

Zieske Land Surveying, Inc. of Windom

1861 U.S. General Land Office notes, obtained from mngeo.state.mn.us, show the corner marked with a wood post set in mound of earth with pits and trench dug around the mound. Also, planted Alder seed between the four pits and trenches.

2000 April 10, ties to Government Corners, obtained from murray-countymn.com, show that Zieske Land Surveying found a ½ inch rebar, 6 inches deep at the corner.

2017 October 18, the DNR Division of Lands and Minerals visited the area of the corner and found a rebar, down 0.4 of a foot. A plastic cap stamped "MN DNR LS 17003" was set on top of the found rebar and found it to be:

2637.29 feet from the northeast corner of Section 26
on the center line of 290th Avenue (gravel surface)

Analysis of the above information led the DNR Division of Lands and Minerals to conclude that the found rebar marks the location of the corner. Searched for and found the 1985 record tie as shown on the sketch of reference ties.